

NETOP™ School6™

Classroom Management Software

Designed for educators who teach in networked classrooms, Netop School incorporates powerful tools for preparation, instruction and evaluation in an intuitive interface that is fully customizable to streamline your teaching process. Share your computer screen with the class, supervise student computer work, lend a hand when needed, control application and Internet use, distribute and collect documents, and create tests and evaluate student progress.

Present lessons dynamically

Demonstrate directly on student computer screens using advanced screen sharing technology with multimedia broadcasting that enables you to share both audio and video.

Supervise student computing

Observe student computer work, monitor progress, and intervene as needed. Screen monitoring and remote control features help you guide student learning.

Prepare lessons at home

Streamline teaching with advanced lesson planning features. Only Netop School lets you carry the teacher program home on a USB stick to prepare lessons and exams at your convenience.

Control Internet and applications

Teachers determine which Web sites and applications students can access. Secure design ensures that students cannot circumvent teacher controls.

Promote collaborative learning

Features like “pass the chalk,” interactive chat, and workgroup audio provide a superior environment for collaborative learning

Evaluate and reinforce progress

Integrated evaluation features let you create and administer tests that grade students in real-time. Identify learning gaps and record lessons to repeat and reinforce concepts.

BENEFITS

- Engages students
- Reduces distractions
- Ensures appropriate use of school computers
- Keeps students on task
- Makes teaching more effective
- Boosts classroom productivity
- Inspires student learning
- Increases retention rates
- Reduces failure rates
- Improves student grades

“Only Netop School6 provides a complete feature-rich set of tools in an intuitive interface that is fully customizable to meet individual teaching needs.”

FEATURES & BENIFITS

Netop School6 is the all-in-one solution that increases teacher efficiency and flexibility while improving the quality of lessons, increasing control, keeping students on task and ultimately increasing student performance and grades.

The 360° Solution for Teaching

Present lessons dynamically

- Demonstrate directly on student computers
- Add dramatic impact to lessons with audio and video
- Record and playback lessons
- Save money on costly audiovisual equipment

Guide student learning

- Observe student computer work
- Lend a hand with remote control
- Use audio and chat features to assist students

Control Internet access and application use

- Limit student Web surfing
- Control application use
- Block ports used for instant messaging and chat
- Combine policies on the fly

Focus student attention and improve efficiency

- Blank screens and lock keyboards
- Launch files and applications on student computers
- Distribute and collect documents automatically
- Wake up and shut down computers remotely

Promote collaborative learning

- Pass the chalk to students
- Moderate group chat sessions
- Many-to-many audio sessions
- Create student-led workgroups for learning

Prepare lessons at home

- Streamline teaching with advance lesson planning
- Record demonstrations in advance
- Carry the teacher program anywhere on a USB stick

Evaluate student progress

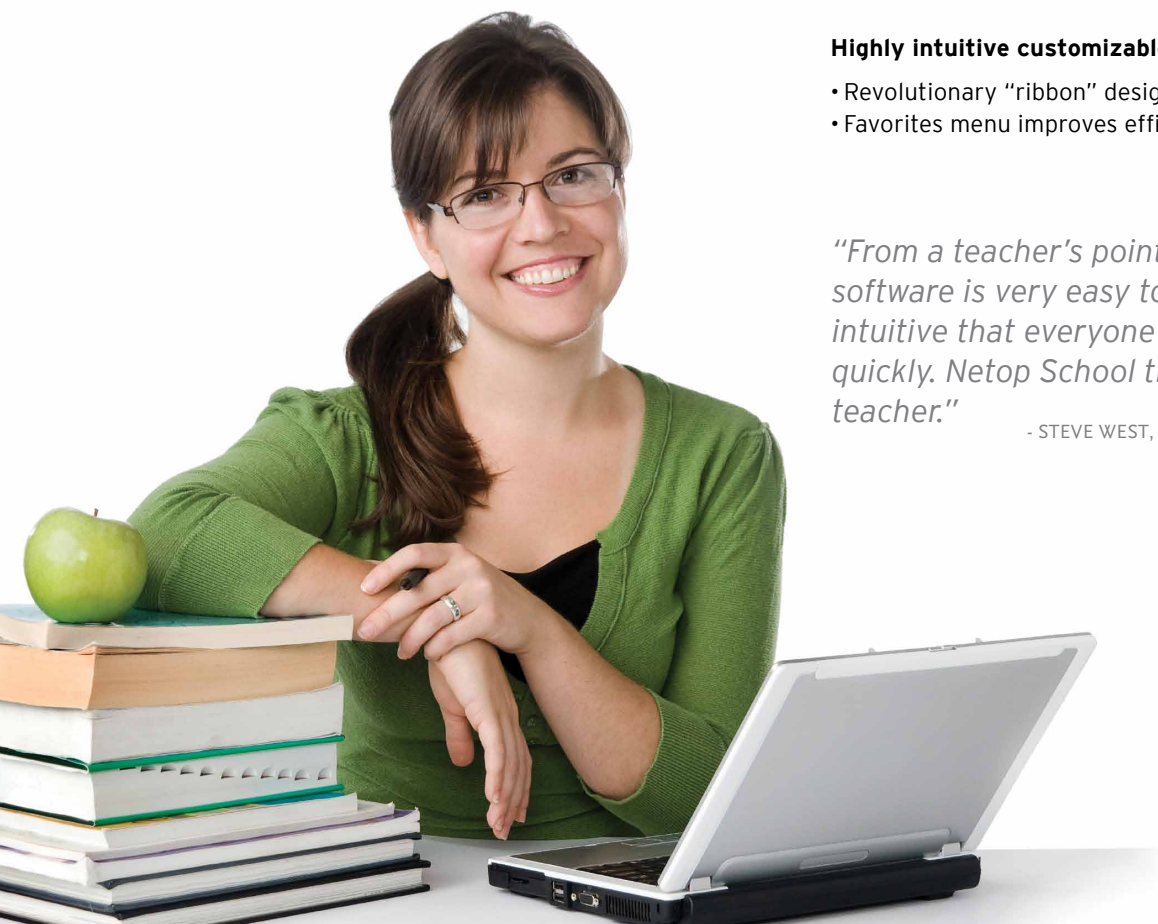
- Design tests and surveys with test wizard
- Drag and drop test administration
- Automatic real-time evaluation and grading

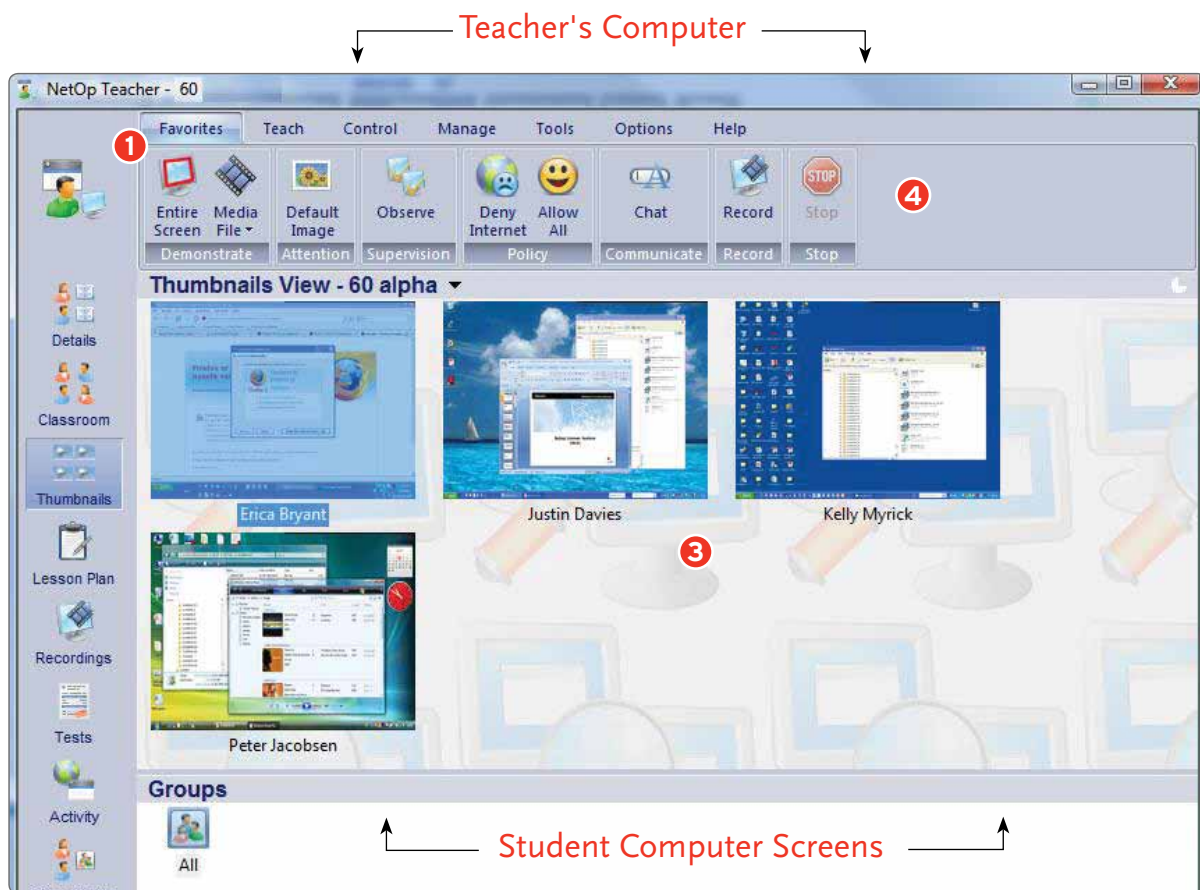
Highly intuitive customizable interface

- Revolutionary "ribbon" design
- Favorites menu improves efficiency

"From a teacher's point of view, this software is very easy to use. It is so intuitive that everyone catches on quickly. Netop School thinks like a teacher."

- STEVE WEST, ASHEVILLE MIDDLE SCHOOL





Prepare computerized lessons at home
Carry the teacher program on a USB stick and prepare assignments and tests at home without pre-installing software.



HIGHLY INTUITIVE CUSTOMIZABLE INTERFACE

- 1 Revolutionary "ribbon" design** The new interface design used in Netop School6 moves away from traditional pull-down menus, grouping commands in a "Ribbon" at the top of the screen, similar to that used in Microsoft Office. Teachers will find this new user interface both familiar and intuitive, providing easy access to a rich set of features. You now have one-click access to commands with clear labels, making it easy to find functions.
- 2 Favorites menu** The Favorites tab offers efficient access to the most frequently used teaching commands. Personalize this tab so that your favorite controls are prominently positioned where they are easy to find while you are in the midst of teaching. Netop's full set of comprehensive controls are available in the Teach, Control, Manage, Tools and Options tabs.
- 3 Thumbnail View** The Netop School user interface was designed to help teachers be more productive and efficient. One key feature is a thumbnail view of each student computer. You can easily monitor activity and student progress at a glance.
- 4 Make the ribbon your own** Only Netop School6 offers a completely customizable interface that can be adjusted to match your own teaching methods and preferences. You can:

- Create, hide or remove tabs and groups
- Rename or reorganize tabs and groups
- Rename or reorganize individual commands

- Choose large buttons, small buttons or text for commands
- Define your own keyboard shortcuts with quick access keys
- Select from a variety of color schemes

- Save all your preferences as part of your teacher profile

The Challenge of 21st Century Teaching

Instructing today's computer literate students using conventional teaching tools is a challenge. Boards and projectors are simply not suited to subjects where hands-on experience is the best option. As a result, the computerized classroom has become a more prevalent and preferred environment for 21st century teaching.

Easy access to the Internet is a challenge to security and to student focus, however. It's easy to stray while seeking information online and become distracted by instant messaging services and e-mailboxes.

So how do you keep students on task? With Netop School you can take thoughtful steps to ensure that putting a student in front of a PC truly improves learning efficiency and teaching quality.

The Netop Solution

Netop School is a user-friendly, efficient, and secure solution for computerized teaching at any level. This all-in-one solution increases your efficiency and flexibility while improving the quality of your lessons. You will keep every student on task and easily maintain control of student computers and the classroom.

For teachers everywhere, Netop School opens a world of possibilities. Broadcast any screen to all students. Monitor the work of individual students in real-time. Control every computer screen, keyboard and mouse. And with "pass the chalk" functionalities and workgroup creation, you can enable truly interactive discussions and problem solving.

Netop School brings you the benefits of computerized teaching and much more. Use it with a digital whiteboard for the functionalities of a projector at just a fraction of the cost. And with extensive testing functionalities, you can track student progress over an extended period of time.

MODULES AND OPTIONS

TEACHER

Module installed on the teacher PC for control of the classroom

GATEWAY

A module offering routing services of protocols. Used for flexibility in terminal services environments.

NAME SERVER

Enables resolution of Netop names even with dynamically allocated IP addresses. Facilitates communication across Internet.

STUDENT

Module installed on classroom PCs with connection to the Teacher module

CLASS SERVER

Facilitates connections between teacher and student modules in environments where computers are moved around while changing subnets.

SUPPORTED PLATFORMS

Windows 7, Windows Vista, Windows XP, Windows 2000, Windows NT4, Windows 9x, Windows Terminal Server, Citrix, Windows Server 2003 and Widows Server 2008 R2.

Netop School6 is available in more than a dozen languages:

- | | | | |
|-------------------|--------------------|-------------------|----------------------|
| • English | • French (FR-FR) | • Finnish (FI-FI) | • Russian (RU-RU) |
| • Arabic (AR-SA) | • German (DE-DE) | • Swedish (SV-SV) | • Spanish (ED-ES) |
| • Chinese (ZH-CN) | • Italian (IT-IT) | • Hebrew (IW-IL) | • Portuguese (PT-PT) |
| • Dutch (NL-NL) | • Japanese (JA-JP) | • Korean (KO-KR) | |



www.netop.com