

NETOP®
Vision™
Classroom Management Software



Release Notes

Product version:

Vision and Vision Pro version 8.2.2

Build number:

8348

Shipping date:

November 13, 2013

Updates and improvements

This release is an update for version 8.2 which was released on October 15, 2013; the release replaces version 8.2.

The release includes two important improvements: smoother update for customers who are updating from previous versions of Vision or Vision Pro and full support for Windows Server 2008 R2 and Windows Server 2012.

Also, the TeachPad did not work in 8.2; this has been fixed in version 8.2.2.

Updating from Vision / Vision Pro version 6.9 or later

Customers who are using Vision / Vision Pro version 6.9 or a later can update their existing installation to version 8.2.2. Any settings, including classroom definitions and any changes to dashboard background color or graphics will automatically be updated.

Full support for Windows Server 2008 R2 and Windows Server 2012

This release provides full-featured support for the Vision student module installed on Windows Server 2008 R2 or on Windows Server 2012.

As a maintenance release, version 8.2.2 is available for download to customers subscribing to the Netop Advantage Program. If you have questions about your license or wish to purchase an upgrade, please contact [Netop Customer Service](#) or your local [Netop Partner](#) for more information.

Release theme

Support for Remote Desktop Services means that schools can have the Vision student module installed and running on a school server. The school then enables students to access the Vision student module without any Vision installation on student devices.

The student device can be any type of device capable of accessing a remote desktop. To connect to a desktop on the server a tool is required on the student device. On Windows computers **Remote Desktop Connection** can be used; for Mac computers a similar **Remote Desktop Connection for Mac** is available and for tablets a number of Remote Desktop Connection apps are available from App Store and Play Store respectively.

Supported server versions with this release are: Windows Server 2008 R2 and Windows Server 2012.

Windows Server is the foundation that multiple vendors of Terminal Services software and hardware products build on, notably Citrix with XenDesktop¹ and Citrix Viewer and nComputing with vSpace Server². While Netop has NOT yet tested and verified that Vision student module on Windows Server works with these products, we do anticipate that Vision will work and plan testing and verification for future releases.

The second release focus marks a new beginning for Vision with respect to potential internationalization in that we have completed some major source-code work that enables us to easier and faster localize our application. Vision now supports Unicode and the first market to benefit from the code conversion is Japan.

The release also includes a number of issue resolutions.

Remote Desktop Services Support

Schools are increasingly taking advantage of virtual desktop infrastructures to deliver standardized, controllable and scalable student virtual desktops. Virtual desktop can be displayed on different operating systems and devices, including standard PCs and Macs, but also on tablets, thus providing a consistent teaching and learning environment for teachers and students.

Using Remote Desktop Services enables students with almost any device to access school-managed virtual desktops – thus eliminating the need for school IT-administrators to worry about application distribution and configuration.

Supported environments

This release supports Microsoft Remote Desktop Services environment (formerly known as Terminal Services) in Windows Server 2008 R2 and Windows Server 2012.

The Netop Vision student module can be installed and run on the server.

As Citrix XenDesktop runs on Windows Server 2008 R2 and on Windows Server 2012 Vision on those server versions should be able to work with XenDesktop also. This would enable students to use Citrix Receiver to access their remote desktop; Citrix Receiver runs on virtually any device operating platform and is very user-friendly. However, XenDesktop has not yet been tested and validated to work with Netop Vision.

Installation

Vision utilizes the Remote Desktop IP virtualization feature available in the newer Windows Server versions; IP virtualization means that every logon session on a Windows Server machine gets a distinct IP address. When installing and configuring the Windows Server for the Vision student module, Remote Desktop IP virtualization must be enabled and the virtualization must be “Per session”. This is done differently for the server versions; please refer to Microsoft documentation for specific instructions.

¹ XenDesktop tech info: <http://www.citrix.com/products/xendesktop/tech-info.html>

² vSpace Server info: <http://www.ncomputing.com/products/vspaceserver>

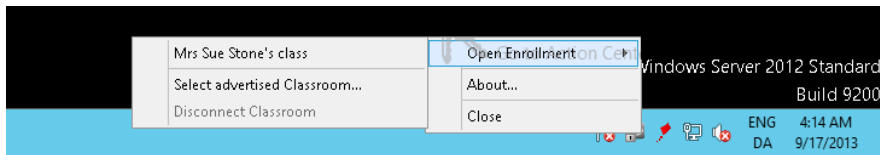
The Netop Vision student module is installed on the Windows Server using the regular setup program. When the student module is installed on a Windows server the option **Student can attend open enrollment classes** is selected by default and is not visible in the user interface.

Student startup

Students access the server using a remote desktop connection viewer or tool.

- For students using a Windows computer this could be the **Remote Desktop Connection** which is included as part of the operating system.
- For students using a Mac computer this could be **Remote Desktop Connection for Mac**.
- For students using a tablet this could be any app available on App Store or Play Store that supports Remote Desktop Connection (and, obviously, the supported Windows Server versions).

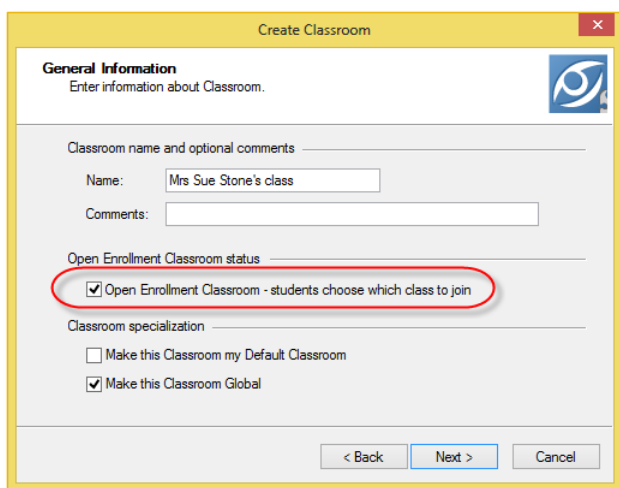
Once they have access to the remote desktop students can join a class that a teacher has already started from the open enrollment menu:



Teacher running a class

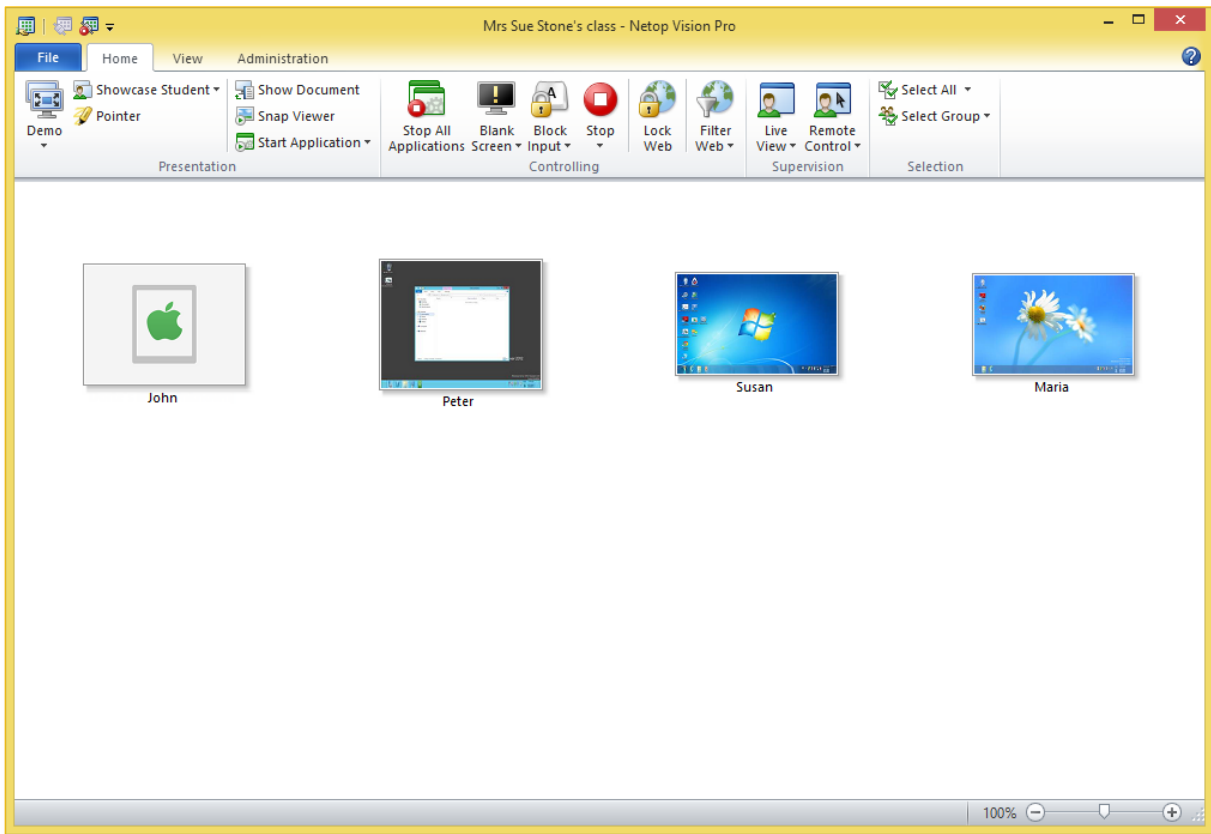
The Netop Vision teacher module must be installed on computer running Windows 8, Windows 7, Vista or XP Professional.

The classroom must be defined as an **Open Enrollment Classroom**:



This means that students are presented with a list of available classroom and they choose which one to join.

Students joining from a remote desktop can be mixed with students joining from other types of devices; below screenshot shows students joining from the Vision Student iPad app, from a Windows Server, from a Windows 7 computer and from a Windows 8 computer.



Unicode Support



With this release Vision supports Unicode, the computing industry standard for consistent handling of characters.

This means that Vision can be more easily translated into languages that have large character sets, like for example Asian languages.

The first new language to benefit from the conversion to Unicode is Japanese: Vision is now also available in Japanese.

Issue resolutions and improvements

Added flexibility on student computer browser behavior, especially for online exams

With this release teachers can choose whether they want student browsers to refresh immediately or not until the student navigates to a different page.

Netop™ is a trademark of Netop Business Solutions A/S. All other products mentioned in this document are trademarks of their respective manufacturers. Netop Business Solutions A/S denies any and all responsibility for damages caused directly or indirectly as a result of using this document. The content of this document is subject to change without notice.

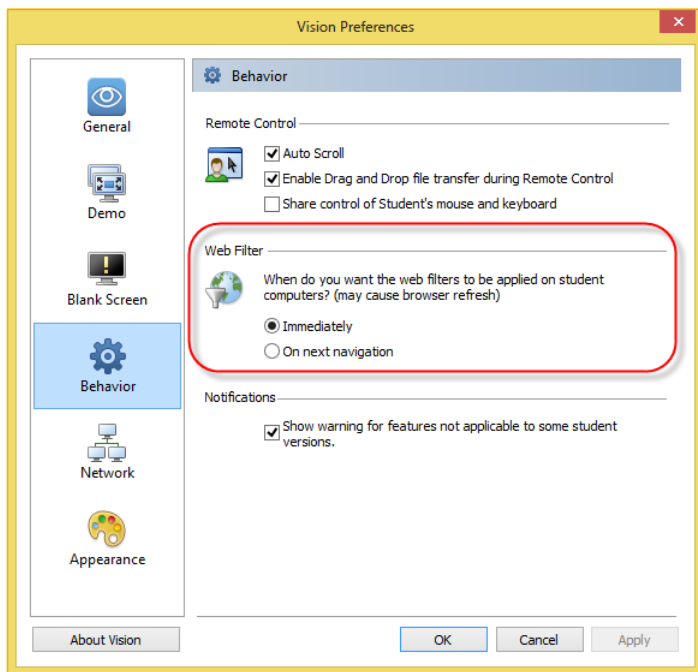
In previous versions the browser window on student computers would refresh when the teacher started up a class. This behavior was implemented to ensure that the teacher computer has full control over the student computer browsers so that students could not continue a browsing session they had started before joining the class.

However, it has turned out that the implementation has negative side-effects as student could potentially lose work.

This was partially changed in the previous release in that student browsers no longer refreshed on join class when no filters were enabled or when the teacher had not changed filters that had already been applied to student computers.

However, customer input indicated that the web filter behavior was still a problem in scenarios where students were working on a web site, for example during an online exam, and the connection between teacher and student computers was temporarily lost. The student computer browsers would then refresh when re-connecting to class.

With this release teachers can choose when they want student browsers to refresh:



Choosing **Immediately** means that student browsers are refreshed when a web filter is applied and when connecting to a class.

This is the way student browsers in Vision have behaved up until now.

Choosing **On next navigation** means that student browsers remain undisturbed until students navigate to a different page. The benefit is that students can remain engaged on the page they are on which is obviously great in exam situations.

However, the downside is that when the teacher applies a web filter, students can remain on the page they are currently on whether the page is desirable in an educational context or not.

Filter Web and Lock Web – support for the latest versions of Google Chrome and Mozilla Firefox

Late June both Firefox and Chrome were released in updated versions where the strategy of managing browser extensions from other software vendors was changed; in Firefox the Vision WebFilter extension was disabled and in Chrome the Vision WebFilter extension was no longer available from Settings.

The impact on Vision was that students using either of those browsers would see a browser error page rather than the Vision page listing blocked sites when the teacher applied a Block List, and access to the web would be blocked.

The issues have now been resolved and Vision ensures that the required Vision WebFilter extension is enabled in both browsers.

Known issues

Renaming the active classroom (Windows 8 only)

If the teacher module is running on Windows 8 and you rename the currently active classroom, the teacher module will fail. When you re-start the teacher module the classroom name has been changed and the teacher module works as normal again.

Suggested workaround: disconnect the classroom before you rename.

Chat on Windows 8

If the student module running on a Windows 8 computer is in Metro mode when the teacher starts up a chat conversation the student will not see the message from the teacher until the student switches to desktop mode.

Student computer behavior on Windows 8

For teachers and student the goal has been that whether teacher and student run on Windows XP, Windows 7 or Windows 8 they should have the same experience when using Vision. For example, when the teacher clicks **Blank Screen** students see the picture that the teacher selected as the blank screen picture and keyboard and mouse are blocked.

The major challenge is that Windows 8 includes two user modes, the Metro user interface with the new Start screen and the well-known desktop mode from Windows 7. The Metro user interface is all about user control, sharing and connecting and this is contradictory to many of the features in Vision which are control-focused. Obvious examples of Vision features where the teacher computer takes control of the student computers are **Lock Web** and **Blank Screen**.

For student computers running Windows 8 this means that Vision will automatically make the switch from Metro to desktop mode whenever the teacher computer issues a control command. So these commands will make the Windows 8 student computer switch from Metro to desktop in order for the teacher to control:

- Demo
- Blank Screen
- Run Application
- Share Document
- Lock Web
- Filter Web

When the control session is finished the student will have to switch back to Metro manually. Any activity that the student was engaged in when the teacher started a control session is saved automatically in Windows 8. This means that if the student was writing a document when the teacher started a demonstration, the student can just switch back to Metro and to the document and the state of the document will be intact.

Please also see the Netop Knowledge Base for [known issues and workarounds](#).