

NETOP®  
**Vision™**  
Classroom Management Software



### Release Notes

**Product version:**

Vision and Vision Pro version 8.6.1

**Build number:**

8605

**Shipping date:**

July 29, 2014

### Release theme

This release is an update for version 8.6 which was released on May 20, 2014.

The release ensures that Vision and Vision Pro work with the recent browser releases of Google Chrome; this was listed as a known issue in the 8.6 release.

As a minor product update, version 8.6.1 is available for download to customers subscribing to the Netop Advantage Program. If you have questions about your license or wish to purchase an upgrade, please contact [Netop Customer Service](#) or your local [Netop Partner](#) for more information.

### Google Chrome update

**Support for latest versions of Google Chrome**

In their recent browser releases Chrome (from version 32) changed the way they manage add-ons and this impacts the Vision add-on which ensures that the blocking features (Lock Web, Filter Web) work. This meant that the blocking features did not work on student computers with Google Chrome version 32 or later.

This has been addressed in the 8.6.1 release.

### Mac student module

With the 8.6 release Netop continues to expand the range of supported platforms and introduces a **student module for Mac computers**. With students in class using Mac computers, teachers can do the following from their Windows teacher computer:

- See a thumbnail of the Mac student computers, similar to Windows student computers.

- Use **Demo** to share their screen with the Mac student computers.
- Use **Live View** to supervise a Mac student computer in a separate window.
- Use **Remote Control** to assist a student using a Mac computer from their Windows teacher computer.
- Use **Blank Screen** to disable keyboard and mouse and display a standard image on Mac student computers.
- Use **Lock Web** to block web access on Mac student computers.
- Use **Block Input** to disable keyboard and mouse on Mac student computers.

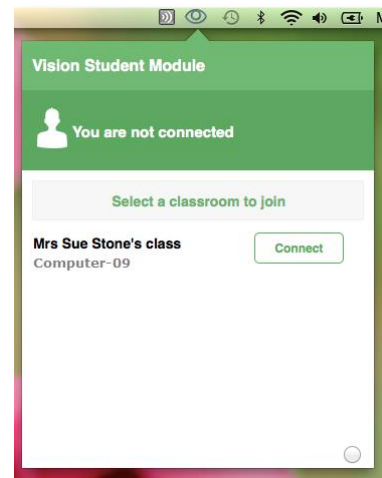
This is the first release of a student module for Mac; later releases will include more features and will also have support for Mac-only environments with a Vision / Vision Pro teacher module for Mac computers.

The Vision / Vision Pro Mac student module runs on Mac OS X version 10.8 Mountain Lion or later.

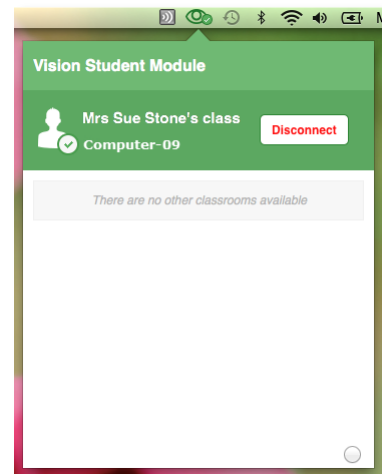
The Mac student module is installed by opening the VisionStudent.dmg file on the student computer.

After installation the module can be started from the Launchpad and after start the gray Vision icon shows in the menu bar to indicate that the student has not yet connected to a class:

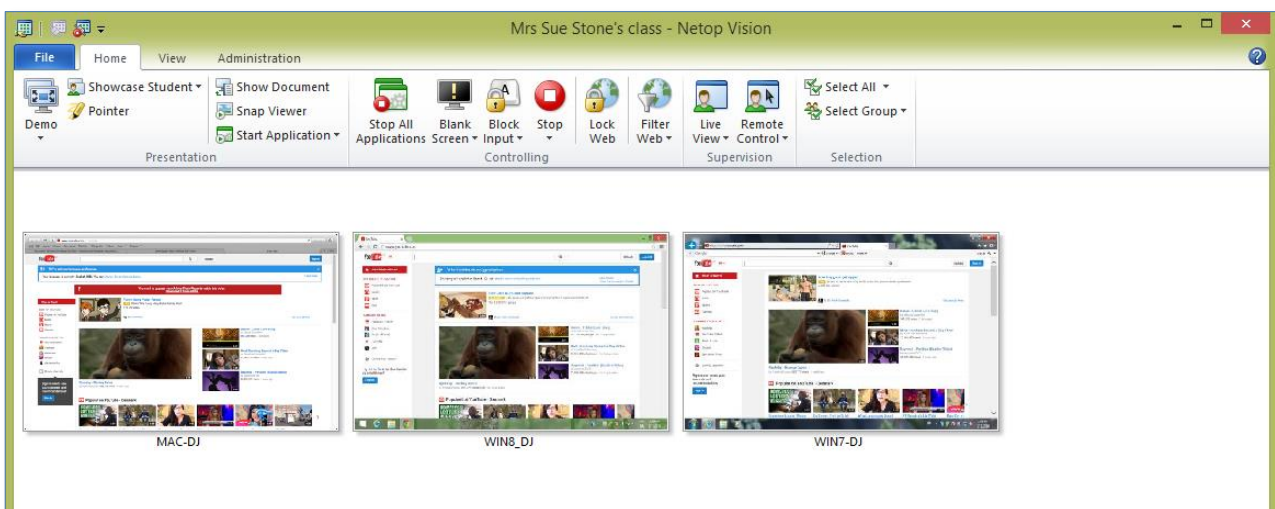
Clicking the icon shows a list of available classes the student can join; in below example there is only one class available:



When the student has joined the class the icon color changes from gray to green and the student has the option to leave the class by clicking the **Disconnect** button next to the class name:



On the teacher's computer the student computer appears as a thumbnail, along with any other Windows or Mac student computers that join the class:



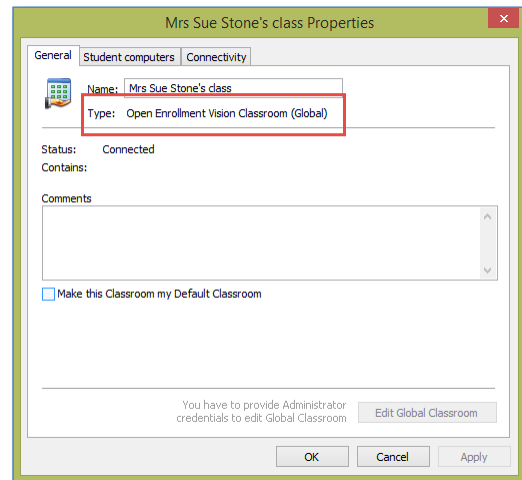
The teacher can use these commands from the Vision Ribbon:

- Demo
- Blank Screen
- Block Input
- Lock Web
- Live View
- Remote Control

The other commands will still appear available as they can be used on the Windows student computers but will have no effect on the connected Mac student computers.

**Note:**

The classroom has to be defined as type **Open Enrollment Vision Classroom** for Mac student computers to be able to join:



**Remotely controlling a Mac student computer from a Windows teacher computer: special keys**

Most of the keys on a Windows keyboard match the keys on a Mac keyboard, including the letters (a-z), the numbers (0-9), arrow keys, delete, backspace, page up, and page down.

However, there are special keys on a Windows keyboard which have no equivalent on a Mac. The Windows keys listed below have no equivalent on a Mac and will have no effect if the teacher uses them during a remote control session:

- NumLock
- Insert
- Home
- End
- F1 to F10
- Tilde key
- Ctrl+Alt+Delete
- Alt+Tab

Some of the special Windows keys are mapped to a special Mac key:

- Windows Ctrl key is mapped to Mac Cmd key
- Windows keyboard shortcuts for Select All (Ctrl+All), Cut (Ctrl+x), Copy (Ctrl+c) and Paste (Ctrl+v) are mapped to the equivalent Mac functions.

## Issue resolutions and improvements

### **Support for latest versions of Mozilla Firefox**

In their recent browser releases Firefox (from version 27) changed the way they manage add-ons and this impacted the Vision add-on which ensures that the blocking features (Lock Web, Filter Web) work. This meant that the blocking features did not work on student computers with the most recent browser versions.

This issue has now been resolved.

### **Using Snap Viewer on student computers connected through Remote Desktop Connection (RDC)**

When teachers used Snap Viewer on student computer connected through Remote Desktop Connection, students would see an error message and **Snap Viewer** did not work.

This issue has now been resolved.

### **Setting file transfer path in Chat**

When setting the file transfer path for individual student computers (Chat > View > Options > Work files folder definition > Users > Set), chat would crash.

This issue has now been resolved.

### **Renaming the active classroom (Windows 8 only)**

If the teacher module is running on Windows 8 and you renamed the currently active classroom, the teacher module would fail. When you re-started the teacher module the classroom name had been changed and the teacher module worked as normal again.

This issue has now been resolved.

## Known issues

### **Windows 8.1 and blocking features**

When the teacher applies a blocking feature (Start Application in Kiosk mode, Blank Screen, Block Input, Lock Web, Filter Web) on a Windows 8 student computer, Vision switches from Metro mode to Desktop mode and blocks as requested.

However, with the release of Windows 8.1 Microsoft changed strategy and the switch from Metro to Desktop mode no longer works. This means that when the student computer is running Windows 8.1 the blocking features in Vision do not work.

This issue will be addressed in the next Vision release.

### **Chat on Windows 8**

If the student module running on a Windows 8 computer is in Metro mode when the teacher starts up a chat conversation the student will not see the message from the teacher until the student switches to desktop mode.