

NETOP™

# Vision6®

Classroom Management Software

## Quick Start Guide

Vision6 has two main components: the teacher module and the student module.

To use the Remote Installer to install Vision on student computers, you will need a login and password that has administrative privileges on the teacher and student machines.

For the remote installation of the student software, you can either log on to the teacher computer with the administrative user account, or you can specify alternative credentials during the remote installation process.

## Installing the Vision Teacher

1. Download the Vision installer file to the teacher's computer and unzip the file.
2. Double-click the Vision setup program icon to launch the Install Shield Wizard and follow the instructions on your screen.
3. At the Setup Mode screen, select **Install** and click **Next**.
4. At the Setup Type screen, select **Vision Master** and click **Next**. (Figure 1)
5. At the Licensing screen (Figure 2)
  - 30-Day Trial Users:** Simply click **Next** to begin your trial.
  - Vision-Customers:** Enter your license key(s) in the appropriate field(s) to activate your purchase.
6. At the Simple/Advanced Setup screen, select **Simple Setup** and click **Next**.
7. Click **Install** to begin the installation of Vision6 on the teacher's computer.
8. At the InstallShield Wizard Completed screen, click **Finish** to launch Vision.

**Note:** When installing Vision 6.9 on computers running older Vision versions, the older version must be removed prior to installing 6.9.

When upgrading whole classrooms to 6.9, use the deploy functions from the Master to remove all Clients, then manually uninstall the Master, install the 6.9 Master, and use deploy to install Clients.

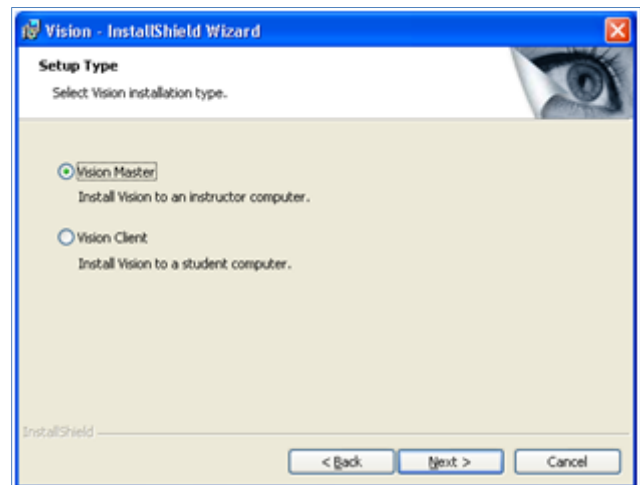


Figure 1

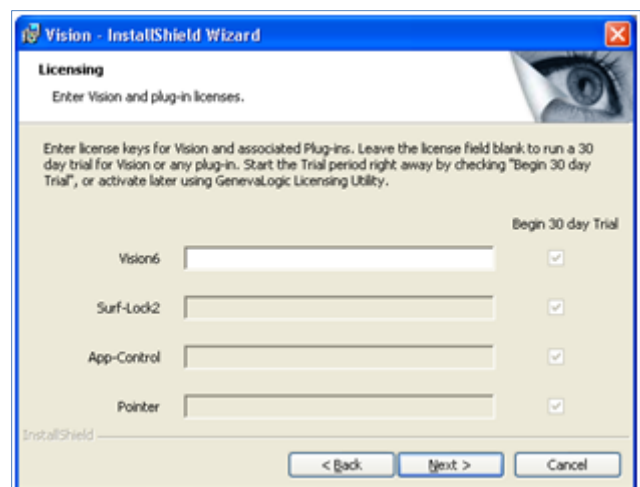
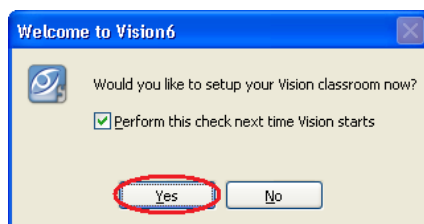


Figure 2

## Remote Student Software Installation

Make sure student computers are powered on. If you are running the Windows Firewall, configure it to allow File & Printer sharing on all student computers.

1. When the Vision teacher module launches after the installation and the Welcome to Vision6 message appears, make sure your student computers are switched on and click **Yes**.



2. At the Vision Classroom Wizard welcome screen, click **Next**.
3. To choose which computers to install Vision on:
  - a) Select your Domain/Workgroup from the drop down box. If you do not know your Domain/Workgroup name, select the asterisk (\*).
  - b) You may also enter a text string in the Filter box to filter which computers appear in the Network computers pane.

► **Example:** If all computers in room 205 have the characters **205** in their name, enter **205** in the Filter box. Only the computers that include this text string will appear.

Click > to move the selected computers into your classroom and click **Next** to continue.

4. On the final screen of the Setup Classroom Wizard, read the note and make sure that the checkbox labeled **Take me to the Vision Deployment Wizard to install or update client software on student computers** is checked.
5. Click **Finish** to close the Setup Classroom Wizard and launch the **Vision Deployment Wizard**.
6. At the Vision Deployment wizard welcome screen, read the important notes and click **Next**.
7. As you need administrative rights to install Vision student software on student computers, you need to decide if you want to proceed with your current credentials, or if you want to specify alternative credentials with administrative rights on the student computers. Click **Next** when you have made your choice.
8. When the Install / Update Vision Student Software dialog appears, select the computers in your classroom targeted for the remote installation. Click **Next** when you have finalized your selection.
9. On the Confirm Installation / Update page, confirm your selection by clicking **Install**.
10. When the Vision Student Software Installation dialog appears, the installation will begin automatically. Once the progress bar and log indicate that the process is complete, click **Next**.
11. When the final screen appears, click **Finish** to open your new Classroom.

► **Note:** If the remote installation does not complete successfully, you may need to install the student software manually on each student computer. For more information, visit our Knowledge Base at [www.netop.com](http://www.netop.com).

