



[Customer Portal](#) > [Knowledgebase](#) > [Education Pro](#) > [FAQs](#)

 Search

Articles in this section



Configuring Client Connectivity to an Education Pro Server

28 days ago · Updated

Follow

When the Impero Client is installed, it performs a UDP broadcast to detect an Impero Server to connect to. On occasion, such as within VLAN environments, this UDP broadcast may fail to detect and connect to an Impero Server.

In such cases, there are a number of ways in which you can ensure that your Impero Clients connect to your Impero Server:

Method 1: DNS entry (Only if you have one Impero Server on your network)

Method 2: ServerIPFixed text file (Manual Method)

Method 3: Editing registry keys through Group Policy

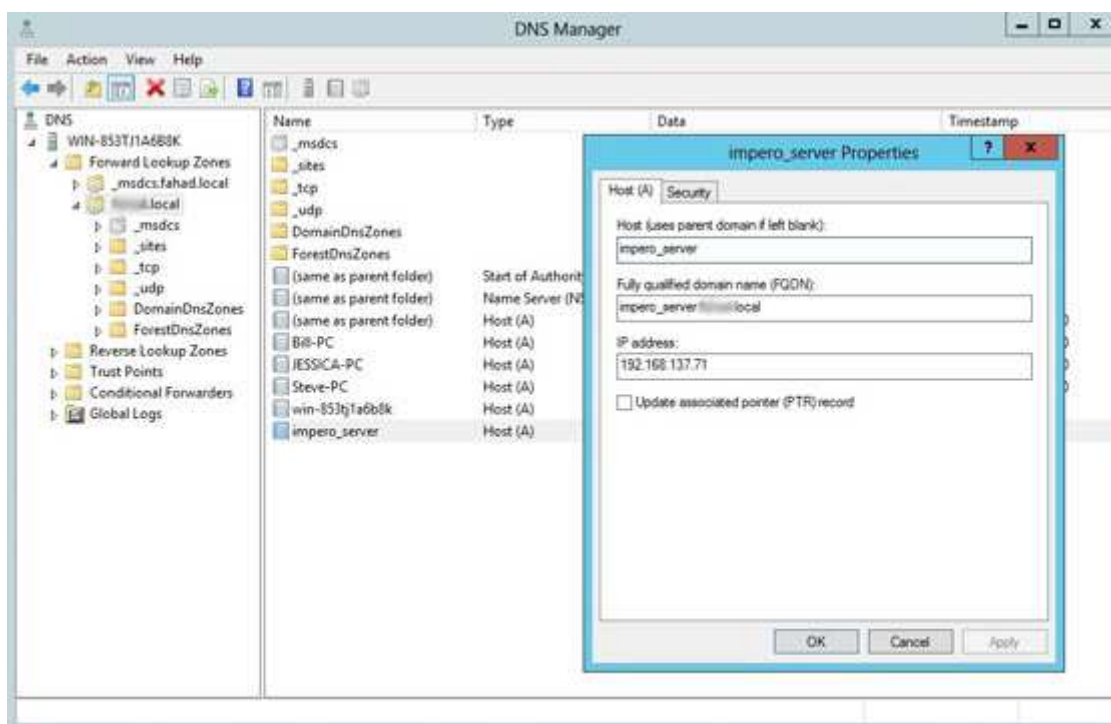
If you are unsure which method to use feel free to contact us via our live chat.

Method 1: DNS entry

Open DNS Manager, Drill-down to your domain under Forward Lookup Zones and create a New Host (A or AAAA) record in DNS.

Call the entry '**impero_server**' (or 'impero-server') with the IP Address of your Impero Server machine.

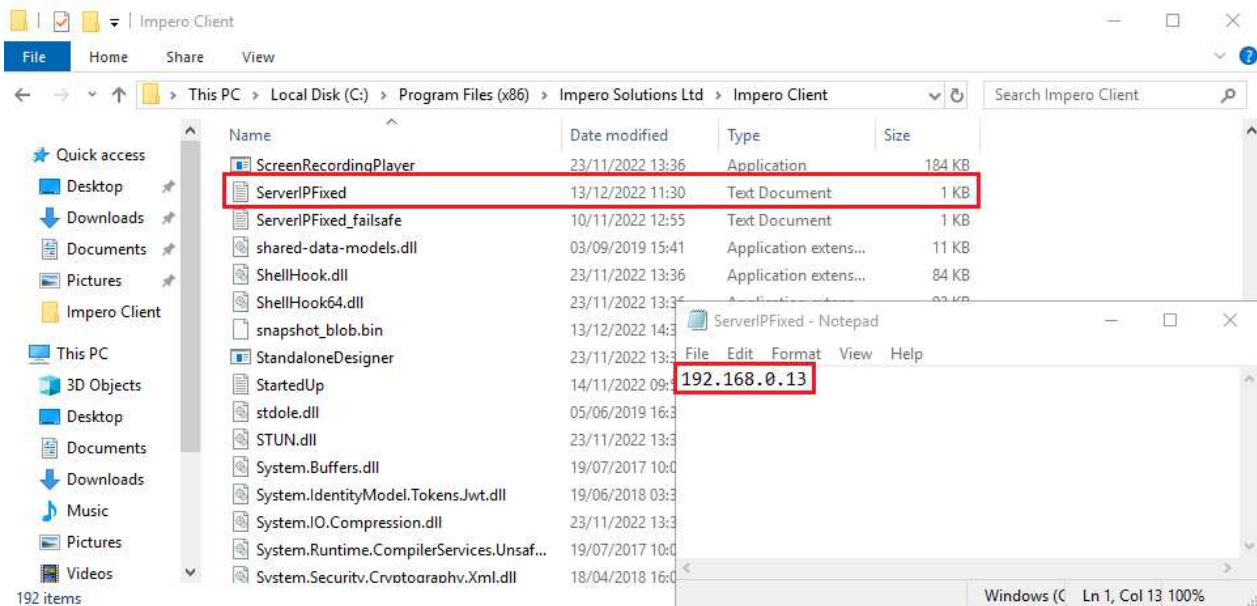
This is not a viable option if you have more than one Impero server on the same network, it is required that you use method 2 if you have more than one Impero Server.



Method 2: ServerIPFixed text file - Windows and MacOS

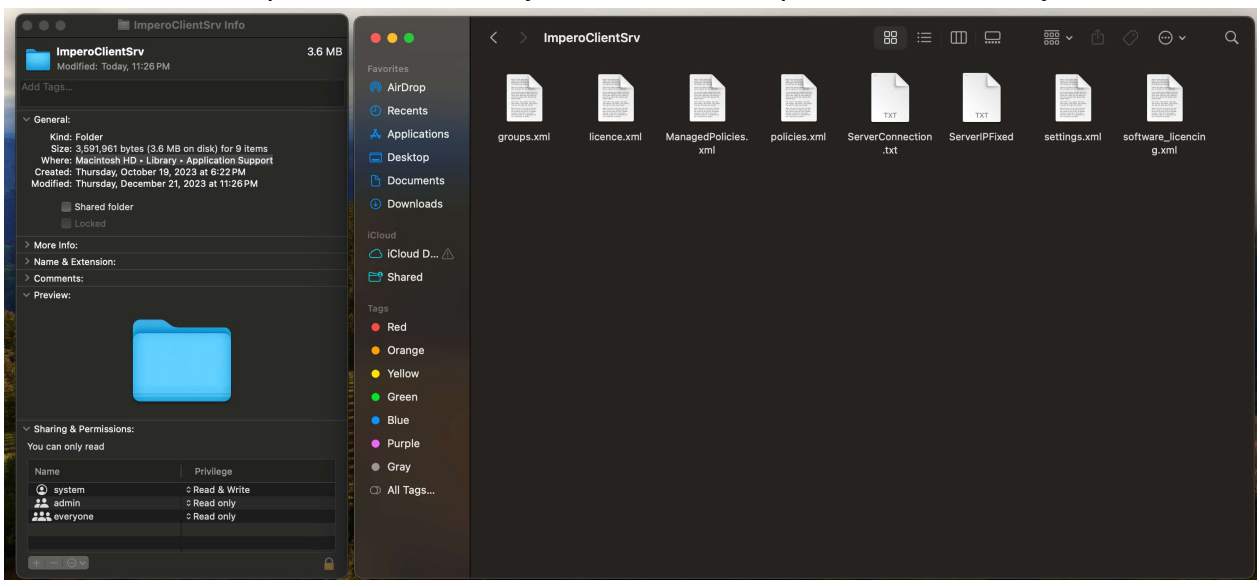
Windows;

In the directory for Impero on the client machines (C:\Program Files (x86)\Impero Solutions Ltd\Impero Client\), create a file named '**ServerIPFixed.txt**' - the contents of this file should be the IP address of the server. Once the ImperoClientSVC service (or the machine) has restarted, the client will connect to the server.



MacOS;

Application/Impero directory on the macOS device, once this has been put in place the macOS Device requires a restart, or you can kill the Impero task in ActivityMonitor.



Macintosh HD>Library>Application Support>ImperoClientSrv>

1. Open TextEdit to create a plain text
2. Key in the server's IP Address to the TextEdit page
3. Select Format from the Menu bar and choose Make Plain Text or you can use

the keyboard shortcut **Shift + Command + T** (this will set the extension of unsaved file to **.TXT** from default file type **.RTF**)

4. **Save the file by clicking File then Save from the menu bar or through keyboard shortcut Command + S**

Method 3: Editing registry keys through Group Policy

64-bit Clients

1. Create a Group Policy Object named '**Impero Registry ServerIP 64bit**'.
2. Start 'Group Policy Management Editor' and go to '**Computer Configuration\Preferences\Windows Settings\Registry**'.
3. Create a new registry item as outlined below:

Field	Entry
Action:	Create
Hive:	HKEY_LOCAL_MACHINE
Key path:	SOFTWARE\Wow6432Node\Impero Solutions Ltd\ImperoV3
Value name:	ServerIP
Value Type	REG_SZ
Value Data:	IP address of Impero server e.g 192.168.1.9

The screenshot shows the Windows Registry Editor interface. On the left, there are two panes: 'Processing' and 'Description'. The 'Processing' pane lists various actions with 'No' for each. The 'Description' pane shows 'No description provided.' The main area displays a table of registry values. The first row is selected, showing 'ServerIP' with an action of 'Create', a hive of 'HKEY_LOCAL_MACHINE', a key path of 'SOFTWARE\Wow6432Node\Impero Solutions', a value name of 'ServerIP', a value type of 'REG_SZ', and a value data of '10.0.0.166'. A 'ServerIP Properties' dialog box is open over this entry, showing the same configuration details in a form. The dialog has tabs for 'General' and 'Common', and buttons for 'OK', 'Cancel', 'Apply', and 'Help' at the bottom.

Name	O.	Action	Hive	Key	Value ...	Type	Value Data
ServerIP	1	Create	HKEY_LOCAL_MAC...	SOFTWARE\Wow6432Nod...	ServerIP	REG_SZ	10.0.0.166

ServerIP Properties

General Common

Action: Create

Hive: HKEY_LOCAL_MACHINE

Key Path: SOFTWARE\Wow6432Node\Impero Solutions

Value name

Default: ServerIP

Value type: REG_SZ

Value data: 10.0.0.166

OK Cancel Apply Help

Preferences Extended Standard

Please ensure that the GPO is linked to the relevant domain, site or OU.



Was this article helpful?

Yes

No

4 out of 5 found this helpful

Have more questions? [Submit a request](#)