

NETOP™

Vision[®]6 VISION@HAND™

Mobile Classroom Control

User Guide

Version 6.9

Contents

- Welcome to Vision@Hand 3
- How Vision@Hand Works 4
- Technical Requirements 4
- How To Install Vision@Hand 5
- Configuring Vision@Hand 5
- Accessing Vision@Hand..... 7
- Using Vision@Hand 8
- FAQs 9

Welcome to Vision@Hand

Vision@Hand is an extension utility installed on a Vision6 teacher's computer. Accessing this utility from a wireless-capable PDA or other mobile device allows you to invoke selected Vision functions.

With Vision@Hand, you may quickly and easily perform the following actions on the entire classroom from a handheld device:

- Blank Screen – Blank student computer screens and lock keyboards and mice to focus student attention
- Surf-Lock – Control Internet access during class time
- Virtual Teacher – Share any student's screen with the entire class

Vision@Hand provides a simple, easy-to-read interface that allows you to see what actions are currently in use. It can be used with a wide variety of web browsers that allow the user to navigate to the teacher's computer from a PDA or other mobile device.



Vision@Hand
(PDA not included)

How Vision@Hand Works

Vision@Hand places a small web server on the teacher's computer that is running Vision6, versions 6.7 and higher. When connected through the browser on the teacher's PDA or other mobile device, this web server displays an interface that allows you to operate the Vision@Hand controls. No software is installed on your mobile device.

In order to use Vision@Hand, you must be connected to the same local wireless network as your classroom. Once connected, open the browser on your mobile device and enter the address (URL) shown in the Vision@Hand configuration. After entering the password you have chosen, you can access key Vision functions with Vision@Hand.

To end your Vision@Hand session, simply close your web browser on your mobile device.

Technical Requirements

Teacher's Computer

- **Operating System:**
 - Microsoft® Windows® XP Professional, Windows Vista™, or Windows 7;
 - 64-bit versions are not supported
 - Vision classroom management software version 6.7.x or higher
- **Processor:** Intel® Pentium® III processor or equivalent; 500 MHz or higher
- **Memory:** 64 MB RAM; 128MB and higher recommended
- **Video Display:** Any 100% VGA compatible graphics adapter supported by Windows

Network

- TCP/IP network with wireless accessibility (802.11x)
- Network must be accessible from a wireless access point (WAP), connected to the same local network as the Vision classroom; WAP SSID and password must be known to user
- The port used by Vision@Hand must not be restricted
- Users must know either the full network name or current IP address of the teacher computer running Vision@Hand

Mobile Device

- WiFi connection configured to connect to the school wireless network (WLAN)
- Functional web browser that accepts standard URLs

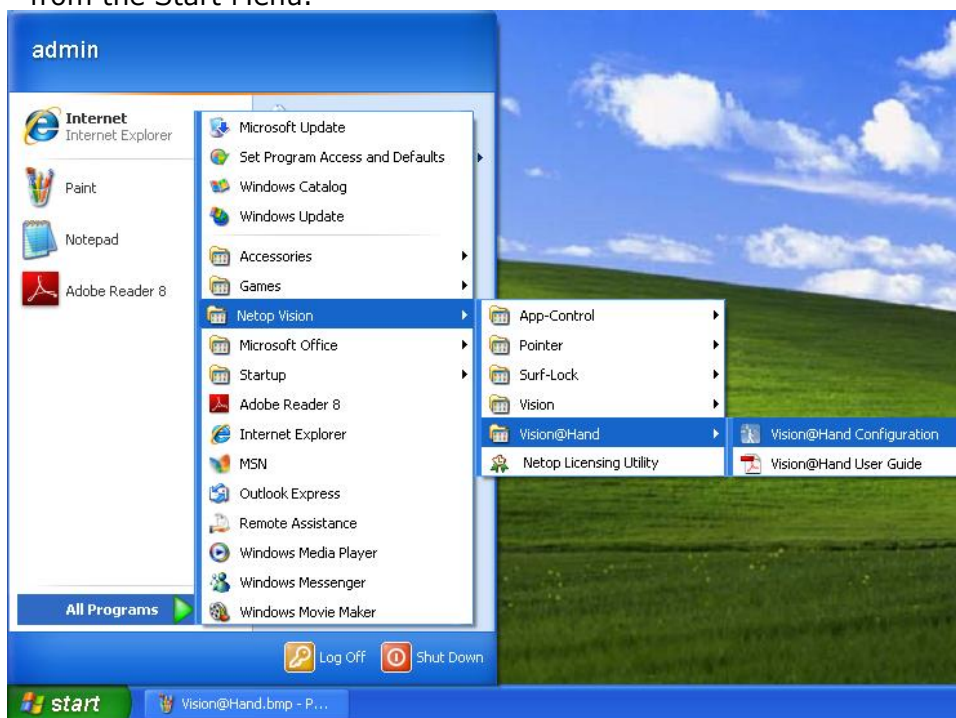
Note: School network configurations vary greatly. Check with your school's network administrator to be certain that your school supports the connection of mobile, wireless-enabled devices.

How To Install Vision@Hand

1. Download the Vision@Hand installer to a teacher's computer running Vision 6.7.x or higher.
2. Run the downloaded installer: Vision@Hand.exe
3. Follow the prompts in the installer. When asked for a password, enter one that you can easily remember. You will use this password to gain access to Vision@Hand from your mobile device.
4. Once the installation is complete, Vision@Hand is ready to use. There is no need to restart the computer or to adjust the student computers.

Configuring Vision@Hand

To setup Vision@Hand, open the Vision@Hand Configuration utility from the Start Menu.

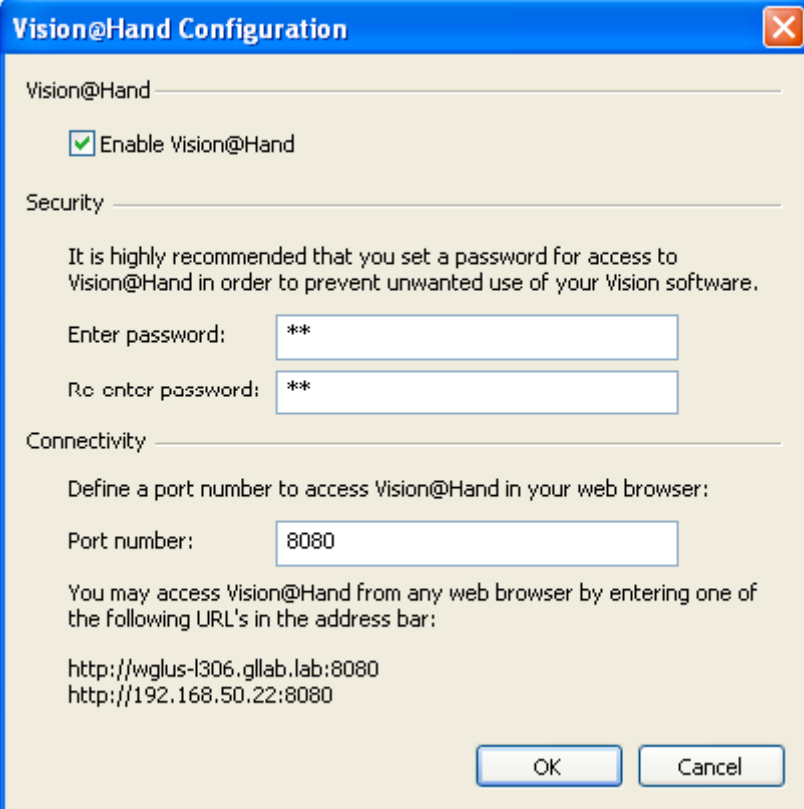


Opening the Vision@Hand Configuration utility from the Start Menu

Configuring Vision@Hand (Continued)

The Vision@Hand Configuration utility allows you to:

- Turn Vision@Hand on or off
- Set a different access password
- Change the port number (only if there is a conflict with the current port number)
- See the URL required to connect to Vision@Hand from your PDA's browser



The screenshot shows a dialog box titled "Vision@Hand Configuration" with a close button in the top right corner. The dialog is divided into three sections: "Vision@Hand", "Security", and "Connectivity".

- Vision@Hand:** A checkbox labeled "Enable Vision@Hand" is checked.
- Security:** A text box contains the message: "It is highly recommended that you set a password for access to Vision@Hand in order to prevent unwanted use of your Vision software." Below this are two password input fields. The first is labeled "Enter password:" and the second is labeled "Re enter password:". Both fields contain two asterisks (**).
- Connectivity:** A text box contains the message: "Define a port number to access Vision@Hand in your web browser:". Below this is a port number input field labeled "Port number:" containing the value "8080".

At the bottom of the dialog, there are two buttons: "OK" and "Cancel".

Vision@Hand Configuration utility

By default, Vision@Hand is enabled and uses the password set during installation.

The default port number is 8080; only change this port number if requested by your network administrator.

Accessing Vision@Hand

Once installed and running, Vision@Hand is viewed on a web browser. To access Vision@Hand from your mobile device:

- Make sure your mobile device is connected to the local wireless network.
- Make sure that Vision on the teacher computer is running and is connected to your classroom.
- Open a web browser (e.g. Safari, Internet Explorer, etc) on your mobile device.
- In the browser's address bar, enter the URL shown in the Vision@Hand Configuration utility. We recommend that you save this address as a bookmark in your web browser for future reference.
- When prompted, enter the password you have chosen for Vision@Hand.
- Vision@Hand appears in your web browser and is ready to use

A Note About The URL: The Vision@Hand Configuration utility displays two possible URLs for Vision@Hand. One uses the computer name; the other uses the numerical IP address. While both will work, we recommend that the computer name version be used whenever possible. Although the IP address may change on a regular basis, the computer name will not.

Using Vision@Hand

Once you have connected to Vision@Hand through the web browser on your PDA or mobile device, you'll see a set of four buttons. When you select a button, a white border appears around the button to indicate it is active.



Vision@Hand Controls

- **Virtual Teacher** - Press this button to display a list of your student computers. From this list, select the student computer you wish to share with the class.
- **Blank** - Press this button to blank student computer screens and lock keyboards and mice
- **Surf-Lock** - Press this button to control student Internet access by applying Surf-Lock; press again to release Surf-Lock
- **Stop** - Releases Blank and Virtual Teacher actions

When Vision@Hand is in use, your regular Vision software works normally; there is nothing to adjust.

To end your Vision@Hand session, simply close your web browser on your mobile device.

Q: Can I use Vision@Hand on more than one teacher computer?

A: Yes, but each one will have a separate URL. Bookmark each one and you may easily change from one to another.

Q: Can I use Vision@Hand in any web browser?

A: Yes you can. It does not matter if the web browser is on a mobile device or not.

Q: When I am away from the school I still have the Vision@Hand bookmarks in my browser. Will Vision@Hand work from outside the school?

A: No. Vision@Hand can only access the teacher computer when the mobile device is connected to the school's network.

Q: I set up Vision@Hand last week and it worked. This week, I cannot connect to it. What is wrong?

A: Many mobile devices provide multiple methods of connecting to networks and the Internet. Use the Vision@Hand Configuration utility on the teacher machine to confirm that you have the most current URL for the teacher computer, make sure that your mobile device is connected to the school wireless network and Vision@Hand will work again.